

This document offers currently released about Dcs2008 serial Digit Control System introduce. If you have any question or suggestion, please contact us.

Our contact:

<http://www.3n2000.com/>

Email: nnnland@publicb.bta.net.cn

Shandong SanEn Electronics Company:

Tel: 0536-3152451 Fax: 0536-3152453

Address: No.239,LinQu Road Shandong Province China Post Code: 262600

Beijing Sunland Electronics Company:

Tel: 010-88900618 Fax: 010-88900318

Address: 1017 Room No166 Fushi Road Shijingshan District Beijing China Post Code: 100043

Chapter One Install

1-1 Prepare to install

1. Minimum system require for install Dcs2008 serial control system software:

- * Pentium 800 MHz or higher CPU * 256M RAM
- * Microsoft Windows 2000(XP or NT) or above * Microsoft Office2003
- * Minimum hard disk space: 50 MB * CD-ROM
- * At least one serial port, for communication * Mouse
- * At least one USB port for assistant data disk
- * VGA or higher resolution display, recommend resolution is 1024*768 or above

2. About Anti-virus software

Some of anti-virus programs can interference installation of 3N2000 Digit Control System. If you have any problem with this installation, please shut down the anti-virus program and install again. (You can run the anti-virus program after the installation is finished.)

1-2 Installation

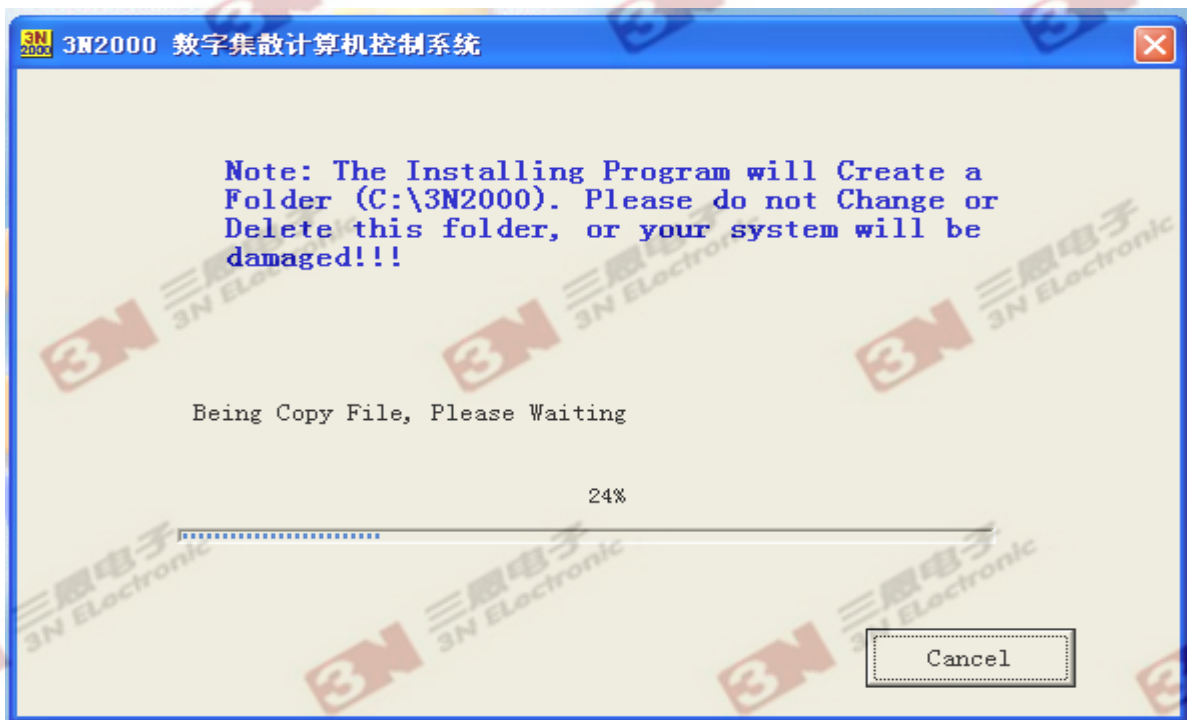
1. Enter "My Computer", enter CD-ROM double click on "setup" to run the installation:



Before install, please select your operation system. If your operation system is not on the list. You need to type in your operation system path.

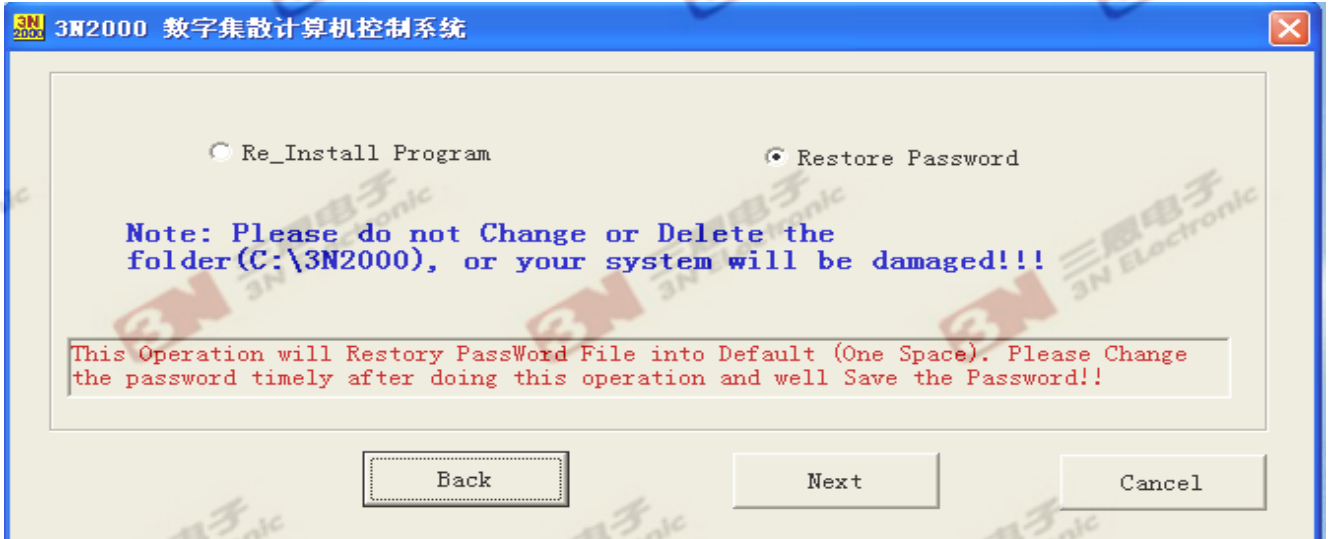
If this is the first time, please select "Full Install", then click "next"

Shows blow:



Restart your computer after the installation finished. Please insert the assistant U disk, and double click on DSC2008 to run the program.

If select "repair", Show this :



Select the part you need to restore then click "next"

If your operation system is not Windows serial or system path is not "C:\WINDOWS\SYSTEM" installation program will back to first step and requires you to type in your system path.

After finish the installation, please don't change or delete any file in C:\3N_2000 folder, or it will causes program error.

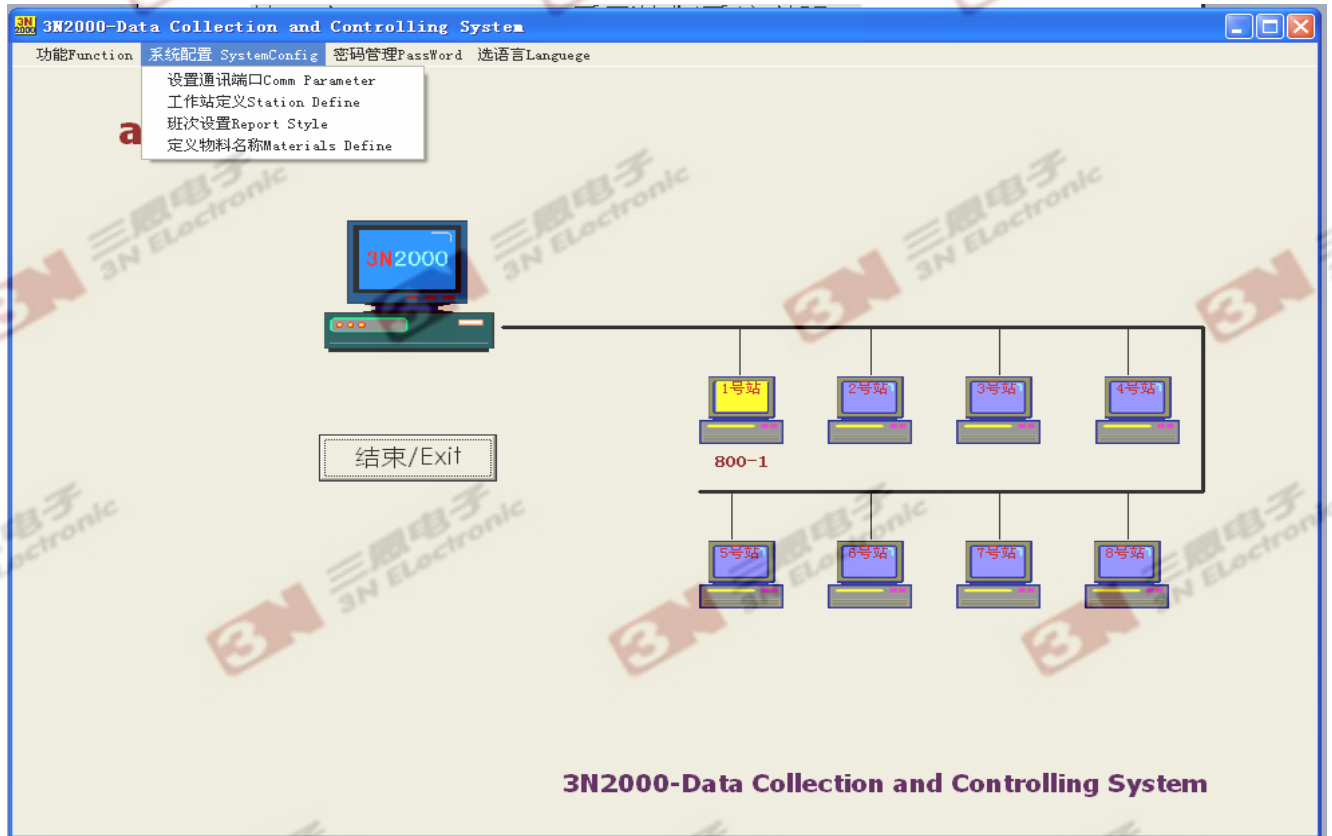
Please change your password and keep your password and install CD safety. If you forget the password, run the installation program select restore password the program will restore the password to default (as a SPACE)

Chapter two DCS2008 serial Control System introduce

2-1: Start

Double click on DSC2008 icon on your desktop to run the system. In a period of time, it will show:

Attention: The assistant data disk MUST be inserted after the installation has finished, and start the program. Must restart the program after reinsert the assistant data disk or reselect the communication port.



1. The computer in the center shows as the server which is running this system. 8 smaller computers show as connected workstations. The workstation which is flashing means it is communicating. Yellow means it is calling, Green means the workstation blow is answering. Click on workstation icon to enter the workstation interface.
2. The names on workstations are user name area. Double click on it to change the name.
3. The information on the bottom is system type, can be chosen in workstation definition (see system menu configuration introduce) .

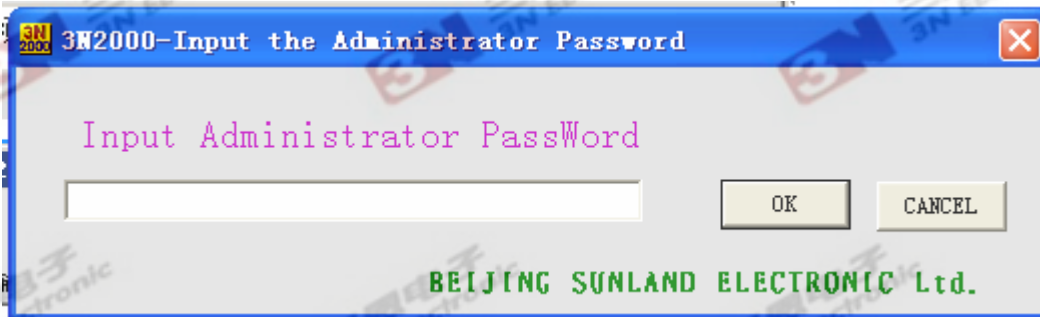
2-2 Main menu introduce

It is very important to configure system correctly. System configuration operation introduce:

2-2-1 Enter the password

The system has two passwords, administrator password and run password. Administrator password will be used when configure the system. For instant, select communication port, definite workstation. Run password will be used when system is running. For instant, calculate formula, remote operation. Both passwords are set to one SPACE as default. Users should change your password when configure the system for safety. If the password is lost, can use the installation program, select restore password, the password will be reset to default. Two passwords should be kept by administrator and operator separately. If the operator is the administrator, two passwords can be set as a same one. The administrator password is at higher level than run password, administrator password can be accepted wherever needs run password. Run password will NOT be accepted where needs administrator password only.

The password must be less than 4 number or letters.

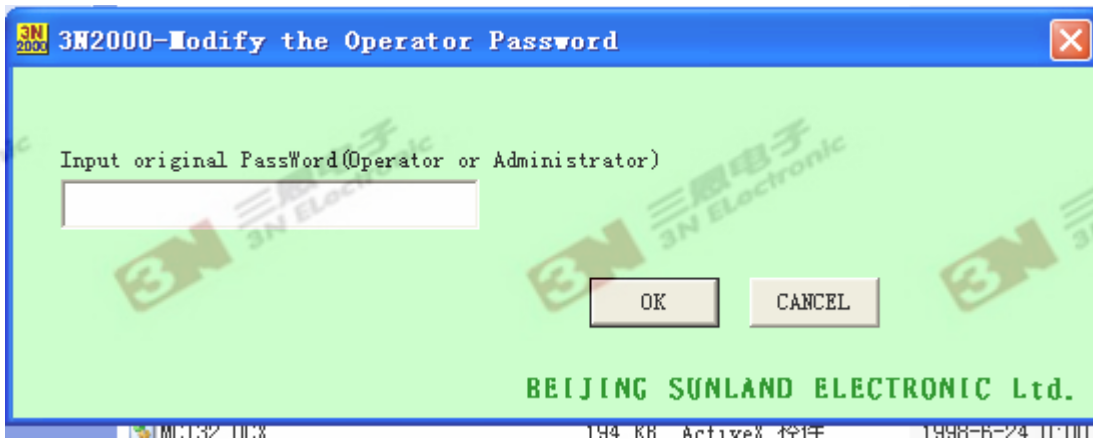


2-2-2 Change administrator password



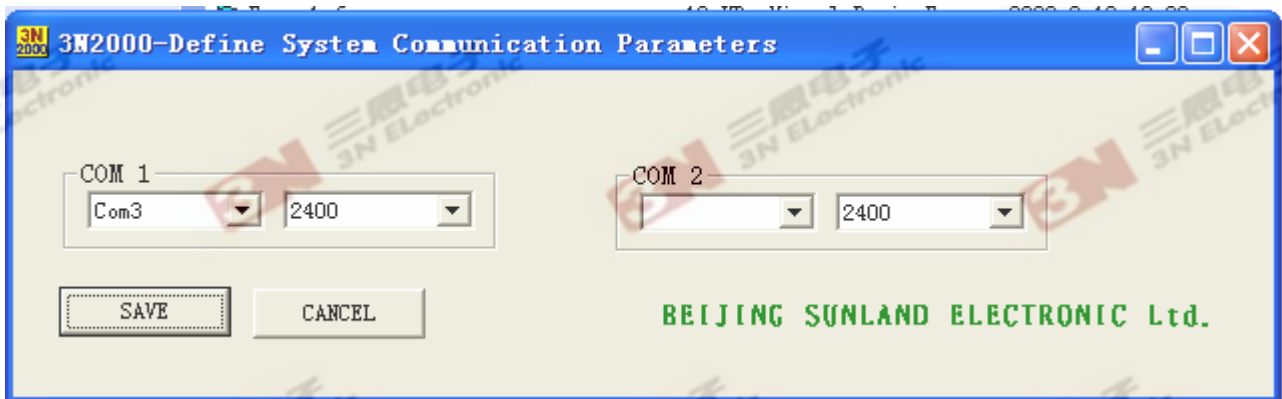
1. Enter your old administrator password then click OK
2. System will require you to enter the new password then click OK
3. Enter your new password again. Click OK.
4. If the old password you entered is not correct, or two new passwords you entered are not same, system will show error, and require you try again

2-2-3 Change run password



5. Enter the old password, both administrator password or run password can be used here then click OK
6. System will require you to enter the new password then click OK
7. Enter your new password again. Click OK.
8. If the old password you entered is not correct, or two new passwords you entered are not same, system will show error, and require you try again

2-2-4 Select Communication Port



Please select communication ports of system computer and lower level computer. COM2 is backup port.

2-2-5 Definition of Workstations

Station	Name	Usage	Group	Terminal	Total	Dis_Total	Unit	PageLook	PLC	Loop	Function
1	800-1	Ration	One Group	800	Total	XX.XXXX	Kilo/M	P1	No	16	No
2											
3											
4											
5											
6											
7											
8											

Define workstation parameter blow, name, control mode, machine type and form of output display. Select from the list.

Name: There are two types of lower level machine can be connected. From 0405-1 to 0405-8 are 0405 serial; from 800-1 to 800-8 are 800 serial.

Usage: 1. Ration
2. Sinter
3. Monitor

Group: Some applications of dosage can divide control terminal into two groups.

Terminal: 0405 optional types are 0405-E, 0405-E07 (08) and 0405-F.
800 optional types are 800 and Chinese 800 and Dcs800.

Total: Total: Display output communicated from terminals.

Shift: display shift output which is system calculated.

Dis_Total : There is very big difference in ranges of various applications, so every workstation can interposes its own display range.

Unit : The unit of Goal and flow from terminals, super-ordination machine also should be corresponding。

Caution: when workstation chooses 0405, connect to PLC and frequency value transfer function at the same time, it can not choose any other workstation.

Means when connect to some of functions, system can only connect to one workstation.

2-2-6 Work Shift Definition

3N2000-Define Report Time Parameters

800 - 1

Report Type: Two, Each 12 hours

First Begin: 0:00

Second Begin: 12:00

Third Begin:

Fourth Begin:

Month Begin: 1

If date=1, month report start from the first day of current month. If date < 1, then month report start from the day of last month.

SAVE Exit

BEIJING SUNLAND ELECTRONIC Ltd.

Use drop-down menu to select shift type and start time. System will calculate other shifts automatically

Work shift type: Optional of two shifts 12 hours each, or three shifts 8 hours each, or four shifts six hours each.

1. Shift one start time: To make sure the form is correct, select from drop-down menu. Change the first shift, second, third, fourth shift will change automatically.

- Select the workstation name before change these parameters.

2-2-7 Definite Materiel Name

If the consumer need defines material name, use the default material as system name, may revise the material name within certainly definition fence, back after save. Enter terminal parameter settings page face again now, being able to discover material name in the material list already becomes a consumer new material name that self defines.

3N2000-Define System Materials

	0	1	2	3	4	5	6	7	8	9	10	11	12	13	14	15
Original		铁粉	aaa	黏土	bbb	石膏	ccc	熟料	ddd	粉煤灰	eee	氟石	fff	添加剂	ggg	添加剂
Update		铁粉	aaa	黏土	bbb	石膏	ccc	熟料	ddd	粉煤灰	eee	氟石	fff	添加剂	ggg	添加剂

Cancel Save

BEIJING SUNLAND ELECTRONIC Ltd.

2-2-8 Change user name

Double click the user name on the FrontPage, enter the administrator password. Then type in your own user name.

3N2000-Define Report Time Parameters

Input your user name as you hope into below text box. Note: The maximum length of inout string is 25 characters.

*** (Input here New User Title) **

SAVE Exit

BEIJING SUNLAND ELECTRONIC Ltd.

2-3-2 Data Management

The system usually take output record automatically during its running. However sometime, maybe communication function is not normal, the user possibly hopes to input the data by hand, can use this data base manage function to replenish the hiatus information or input records .

Station: 800 - 1, Type: Hour, Year: 08, Month: 08, Day: 20, Hour: 14, Shift: 一班

Buttons: LastOne, Update, NextOne, Open, Save, Exit

Record Date: [Time], Record Time: [Date]

Note: The Date of Record probably not Same as Really Date, The Record before

1	2	3	4	5	6	7	8
9	10	11	12	13	14	15	16
17	18	19	20	Total 1		Total 2	
				136		0	

1. Select workstation from drop-down menu, record type, year, month, day, hour or shift. If doesn't choose type, will set to hour by default.
2. Can open file to check details saved before, can also enter new output.
3. Remember to save.
4. "Previous" and "next" can open last one or next record. Change and save.
5. If click on "Update", the record which is changed and other related records (day, month, year record) will be changed as well.

2-4 Workstation page

2-4-1 P5: 0405 Surveillance Workstation (16 Loops)



This workstation's name is 0405-1; control mode is surveillance, one group, no control target value nor corresponding operation. Just surveillance flow and accumulate and working state.

Right click on the scale icon to set scale parameter.

Every icon's "start" button can start one loop.

"Ready" indicates that the terminal works normal. "—" or "???" indicates the data from terminal is not arrived.

2-4-2 P6: 0405 Surveillance Workstation (8 Loops)



Same as workstation above, only difference is 8 Loops.

2-5 Workstation Page Submenus

2-5-1 Setting scale parameter

Move mouse to scale; right click to enter the scale parameter settings:



This setting page is universally, few workstations (data collection) can set analog value input, on/off input, analog value output and on/off output channels. Display definitions and formulas.

Will explain in additional instruction.

For workstations like this only set the type online, linkage and material

Type: select icons on the screen

Online: select this scale is online or not

Linkage: select when giving general order of run or shut down, this scale act or not.(No enable in this page)

Material: select usage of circuit, for dosage control is materiel name.

2-5-3 Running data

Running data records scene information timely, the data is the communication result with terminal, if communication is interrupted, the data will no longer be changed.

3N2000-Data Collection and Controlling System 800-1-Running Data

	Material	G.	Status	AlarmBegin	AlarmEnd	StartTime	StopTime	Goal	Percent	Flow	Total
1	铁粉	1	Stop					11.01	1.1	8.06	17.69
2	aaa	1	Stop					20.02	2	8.10	18.12
3	黏土	1	Stop					30.03	3	8.50	17.41
4	bbb	1	Stop					40.04	4	9.80	17.19
5	石膏	1	Stop					49.94	4.99	7.36	13.57
6	ccc	1	Stop					59.95	5.99	0.75	1.12
7	熟料	1	Stop					69.96	6.99	3.35	6.39
8	ddd	1	Stop					80.08	8	4.95	10.73
9	粉煤灰	1	Stop					89.98	8.99	4.00	8.54
10	eee	1	Stop					99.99	9.99	1.25	3.85
11	氟石	1	Stop					110.00	10.99	2.82	6.36
12	fff	1	Stop					120.01	11.99	4.70	9.76
13	添加剂	1	Stop					130.02	12.99	5.11	9.49
14	ggg	1	Stop					10.01	1	4.48	8.89
15	添加剂	1	Stop					20.02	2	4.24	9.35
16	ggg	1	Stop					59.85	5.98	3.66	8.99
17											
18											
19											
20											

Exit

These data will be saved every hour, becomes history data. Can click on history data, page blow is history data page, data forms are the same. In history data page, can view data base in order of time, or enter the date directly to view the record. Search for record please enter the date in form of YY,MM,DD

3N2000-Data Collection and Controlling System 800-1-History Data

Date: 08-08-20 Time: 15:38:00 Inquire Exit Input the date you want inquire. Two numbers for Year, Month and Day. Year(08) 05 Month(11) 05 Yes

	Material	G.	Status	AlarmBegin	AlarmEnd	StartTime	StopTime	Goal	Percent	Flow	Total
1	铁粉	1	Stop					11.01	1.1	8.07	17.7
2	aaa	1	Stop					20.02	2	8.1	18.13
3	黏土	1	Stop					30.03	3	8.52	17.41
4	bbb	1	Stop					40.04	4	9.84	17.2
5	石膏	1	Stop					49.94	4.99	7.4	13.57
6	ccc	1	Stop					59.95	5.99	.65	1.12
7	熟料	1	Stop					69.96	6.99	3.36	6.39
8	ddd	1	Stop					80.08	8	4.97	10.73
9	粉煤灰	1	Stop					89.98	8.99	4.02	8.54
10	eee	1	Stop					99.99	9.99	1.16	3.86
11	氟石	1	Stop					110	10.99	2.87	6.36
12	fff	1	Stop					120.01	11.99	4.75	9.77
13	添加剂	1	Stop					130.02	12.99	5.15	9.49
14	ggg	1	Stop					10.01	1	4.47	8.89
15	添加剂	1	Stop					20.02	2	4.34	9.35
16											
17											
18											
19											
20											

2-5-4 Produce Report

3N2000-Data Collection and Controlling System 800-1 Shift Report

日报 DayReport (Excel) | 月报 MonthReport (Excel) | 自定义表格 User-Define Report

08-08-20

	1	2	3	4	5	6	7	8	9	10	11	12	13	14	15	16	Total 1
	铁粉	aaa	黏土	bbb	石膏	ccc	熟料	ddd	粉煤灰	eee	氟石	fff	添加剂	ggg	添加剂	ggg	
08:59:40	.01	.02	.02	.01	.02	0	.01	.01	.01	.03	0	0	.01	.02	.01	.01	.19
10:00:00	.53	.54	.52	.47	.34	.02	.19	.27	.24	.17	.17	.33	.28	.26	.23	.22	4.78
10:46:00	.38	.44	.33	.42	.32	0	.11	.17	.13	.06	.15	.21	.24	.22	.21	.19	3.58
一班小计	.92	1	.87	.9	.68	.02	.31	.45	.38	.26	.32	.54	.53	.5	.45	.42	8.55
14:00:00	1	2	3	4	5	6	7	8	9	10	11	12	13	14	15	16	136
15:00:03	.36	.35	.38	.36	.29	.01	.13	.17	8.41	3.79	6.26	9.57	9.33	8.71	9.18	8.84	66.14
15:39:00	.32	.3	.3	.36	.27	.02	.12	.18	.13	.07	.09	.19	.16	.18	.18	.14	3.01
二班小计	1.68	2.65	3.68	4.72	5.56	6.03	7.25	8.35	17.54	13.86	17.35	21.76	22.49	22.89	24.36	24.98	205.15

Input the date you want inquire. Two numbers for Year,Month and Day.

Year (08) Month (11) Day (21)

05 05 20 Yes

Buttons: LastOne, T-Switch, Fresh, NextOne, Print, Inquire, Exit

1. Select shift type from "Report Style", the diagram shows the two shifts, the first shift start from 0:00.
2. Every area marked by different color is different shift. The first line of area is the first record of first shift. The last line of the area is subtotal of this shift.
3. The record before first shift is the record of the day before.
4. Because of the output data is the calculation result of workstation accumulate output, before start the system, the workstation accumulate output need to be cleaned. Or the first record is possibly incorrect.
5. When enter this page, it displays shift output of the day, if inquire shift output of the other day, auto-refresh light will turn into red, new data will not refresh page, in order not to obstruct inquire. When inquire finish, click on auto-refresh to switch command, restore auto-refresh.
6. If change output information in data base management module, data on page will be changed as well.
7. There are four ways to print output record:
 1. Use print command to print window form data, for some low resolution monitor, some of data won't be fully printed.
 2. Use menu function to print daily report, the print form is Excel. See appendix.
 3. Use menu function to print monthly report, the print form is Excel. See appendix.
 4. Use menu function to print custom report, see appendix for the form.

2-5-4-1 EXCEL Daily report

2-5-4-2 EXCEL Monthly report

Print Setting

Direct Print View Before Print

Report Date

This Year August 19

Report Setting

Title bbbbbbbb

Number 55555555

Setting Report Exit

Click on “setting”, activate three columns above, can set print setting (preview or not), date and report setting.

2-5-4-3 Custom Report

Self Define Report

Begin 2007 Y 4 M 19 D 2 Begin Time :2007-4-19 2:00 !

End 2008 Y 7 M 21 D 16 End Time:2008-7-21 16:00 !

Day Report Month Report Year Report 结束

After select date and time, select Day Report, Month Report or Year Report. End time must be later than start time.

2-5-5 Switch workstations

If there are multi-workstations, use Switch workstation page. If there is only one workstation, refresh the page.

2-5-6 Return

Back to main.

Appendix: Standard form of daily and monthly report

日报-XXYYZZ配料车间										打印	返回
07-05-20										AECC-1122	
签字	时间	石灰石	土	混合材	石膏	铁粉					总量
	2:00										
	3:00	3.92	3.92
	4:00	3.92	3.92
	5:00										
	6:00										
	7:00										
	8:00										
	9:00										
	一班	7.84	7.84
	10:00										
	11:00										
	12:00										
	13:00										
	14:00										
	15:00	3.92	3.92
	16:00	3.92	3.92
	17:00	3.92	3.92
	二班	11.76	11.76
	18:00	3.92	3.92
	19:00										
	20:00										
	21:00										
	22:00										
	23:00	3.92	3.92
	0:00										
	1:00										
	三班	7.84	7.84
	日产量										
	月产量	70.56	70.56
	年产量	70.56	70.56
	负责人:										

日报 KKLLHH-熟料车间										打印	返回
07-05-17										451545	
日期	百	十	混合材	石膏	铁粉					累计量 (t)	
1											
2											
3											
4											
5											
6											
7											
8											
9											
10											
11											
12											
13											
14											
15											
16											
17											
18											
19											
20											
21											
22											
23	58.8	58.8	
24											
25											
26											
27											
28	11.76	11.76	
29											
30											
31											
月小计	70.56	70.56	
年小计	70.56	70.56	

Custom diagram

3N2000 数字集散控制系统 打印报表

页 1 单位: 吨

Y-M-D	1	2	3	4	5	6	7	8	9	10	11	12	13	14	15	16	总量1	总量2
	铁粉	aaa	黏土	bbb	石膏	ccc	熟料	ddd	粉煤灰	eee	氟石	fff	添加剂	ggg	添加剂	ggg		
08-05-01	5	5	5	5	5	5	5	5	5	5	5	5	5	5	5	5	80	0
08-05-02	5	5	5	5	5	5	5	5	5	5	5	5	5	5	5	5	80	0
08-05-03	5	5	5	5	5	5	5	5	5	5	5	5	5	5	5	5	80	0
08-05-04	5	5	5	5	5	5	5	5	5	5	5	5	5	5	5	5	80	0
08-05-05	5	5	5	5	5	5	5	5	5	5	5	5	5	5	5	5	80	0
08-05-06	5	5	5	5	5	5	5	5	5	5	5	5	5	5	5	5	80	0
08-05-08	5	5	5	5	5	5	5	5	5	5	5	5	5	5	5	5	80	0
08-05-09	5	5	5	5	5	5	5	5	5	5	5	5	5	5	5	5	80	0
08-05-10	5	5	5	5	5	5	5	5	5	5	5	5	5	5	5	5	80	0
08-05-11	5	5	5	5	5	5	5	5	5	5	5	5	5	5	5	5	80	0
08-05-12	5	5	5	5	5	5	5	5	5	5	5	5	5	5	5	5	80	0
08-06-22	2	2	2	2	2	2	2	2	2	2	2	2	2	2	2	2	32	0
08-06-25	2	2	2	2	2	2	2	2	2	2	2	2	2	2	2	2	32	0
08-06-28	2	2	2	2	2	2	2	2	2	2	2	2	2	2	2	2	32	0
08-08-12	1	1	1	1	1	1	1	1	1	1	1	1	1	1	1	1	16	0
08-08-13	13	13	13	13	13	13	13	13	13	13	13	13	13	13	13	13	208	0
08-08-14	14	14	14	14	14	14	14	14	14	14	14	14	14	14	14	14	224	0
08-08-15	15	15	15	15	15	15	15	15	15	15	15	15	15	15	15	15	240	0
08-08-16	16	16	16	16	16	16	16	16	16	16	16	16	16	16	16	16	256	0
08-08-18	1.31	1.45	1.53	1.63	1.71	1.62	1.77	1.94	2.03	1.13	1.2	1.21	1.26	1.26	1.28	1.28	23.59	0
08-08-19	.07	.08	.07	.06	.05	0	.02	.03	.04	.02	.02	.04	.04	.03	.04	.04	.65	0
08-08-20	.33	.34	.32	.29	.23	.02	.14	.18	.16	.16	.1	.19	.17	.17	.15	.14	3.11	0

Sunland Electronic 2008-8-20 (revise)